

Protecting Our Indian River

Private Well Data

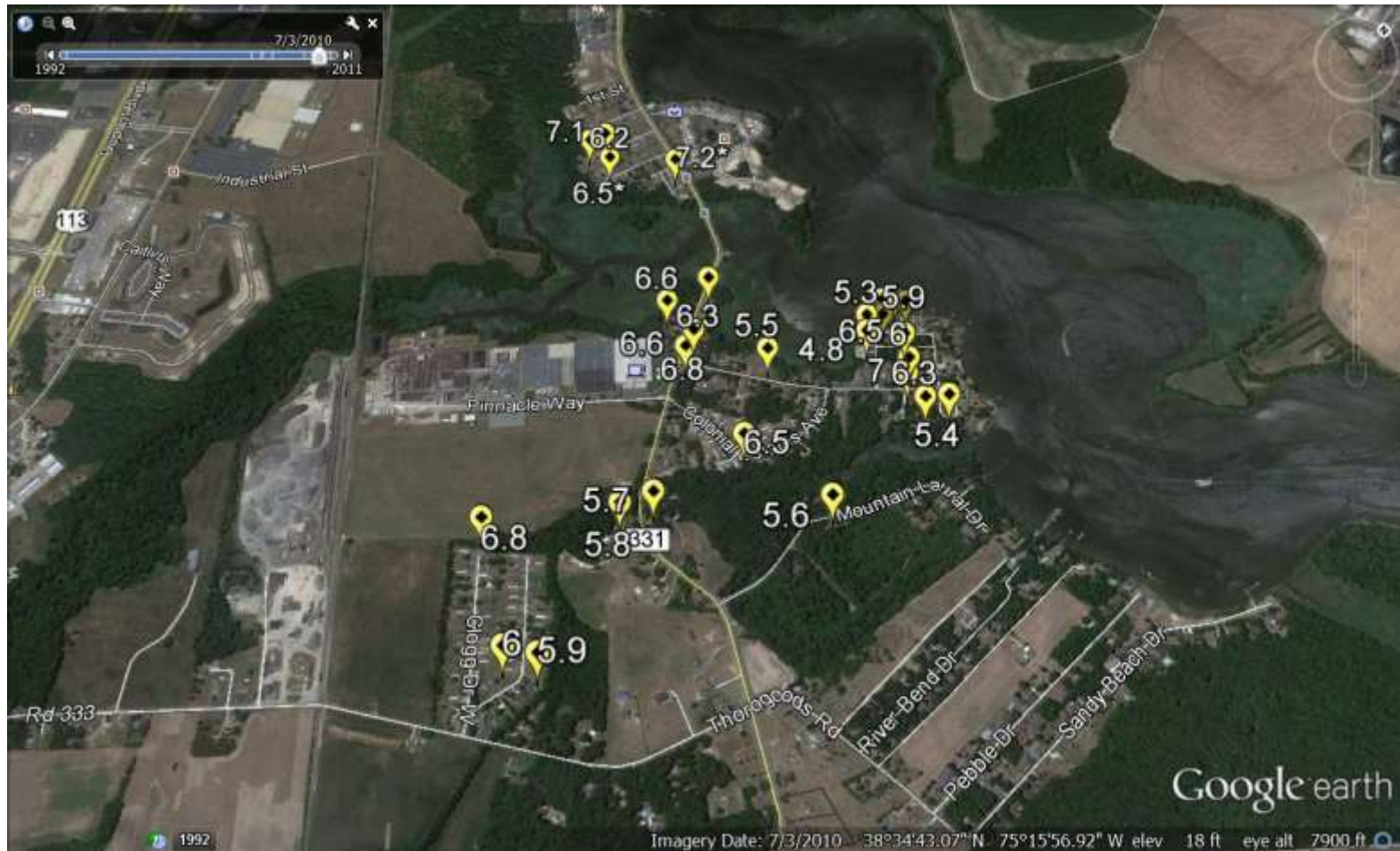
Dotty LeCates, Ken Haynes

Joanne Haynes

December 17, 2013

pH

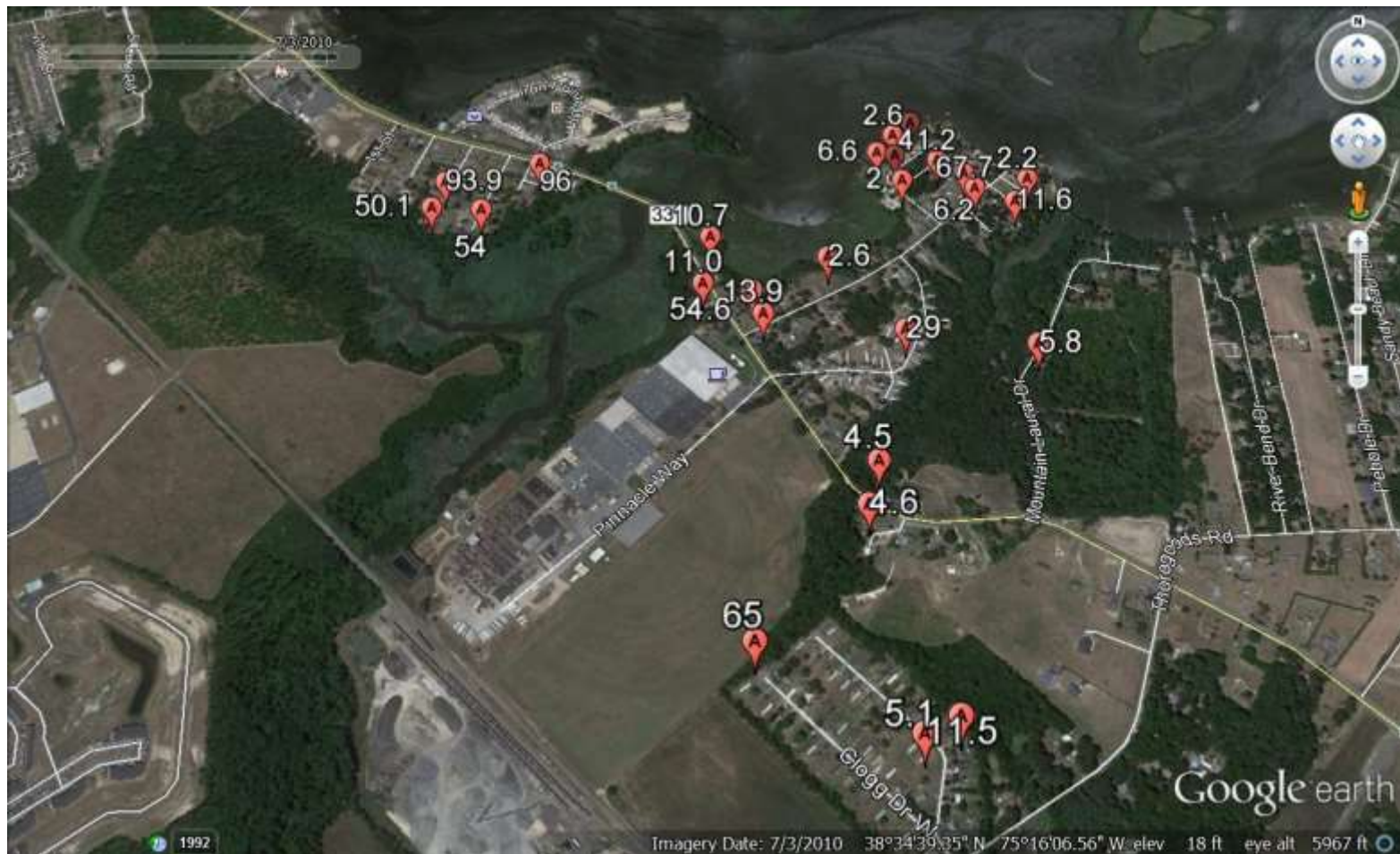
Vinegar Spills have made area more acidic.



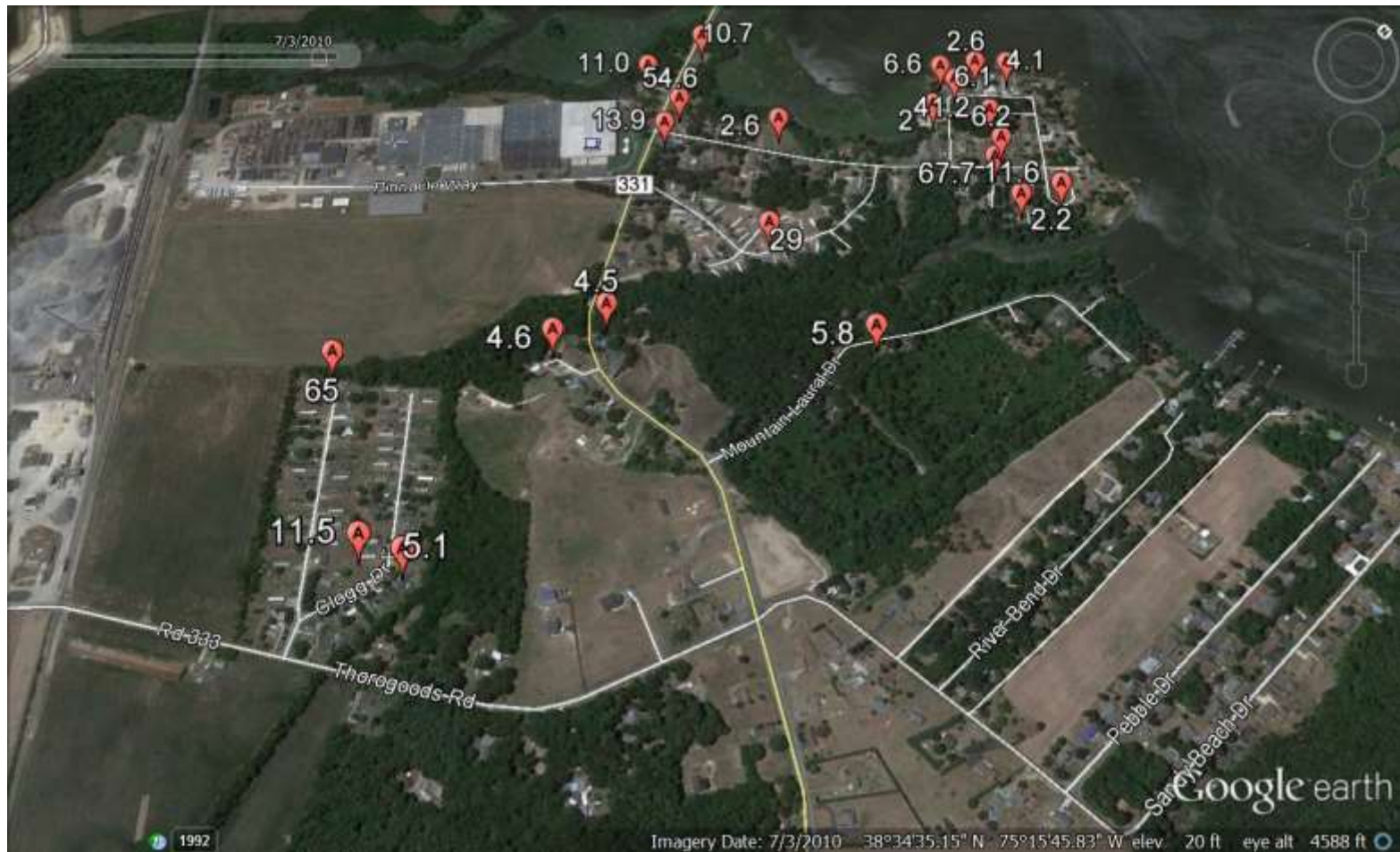
Lower pH water is more corrosive to pipes.



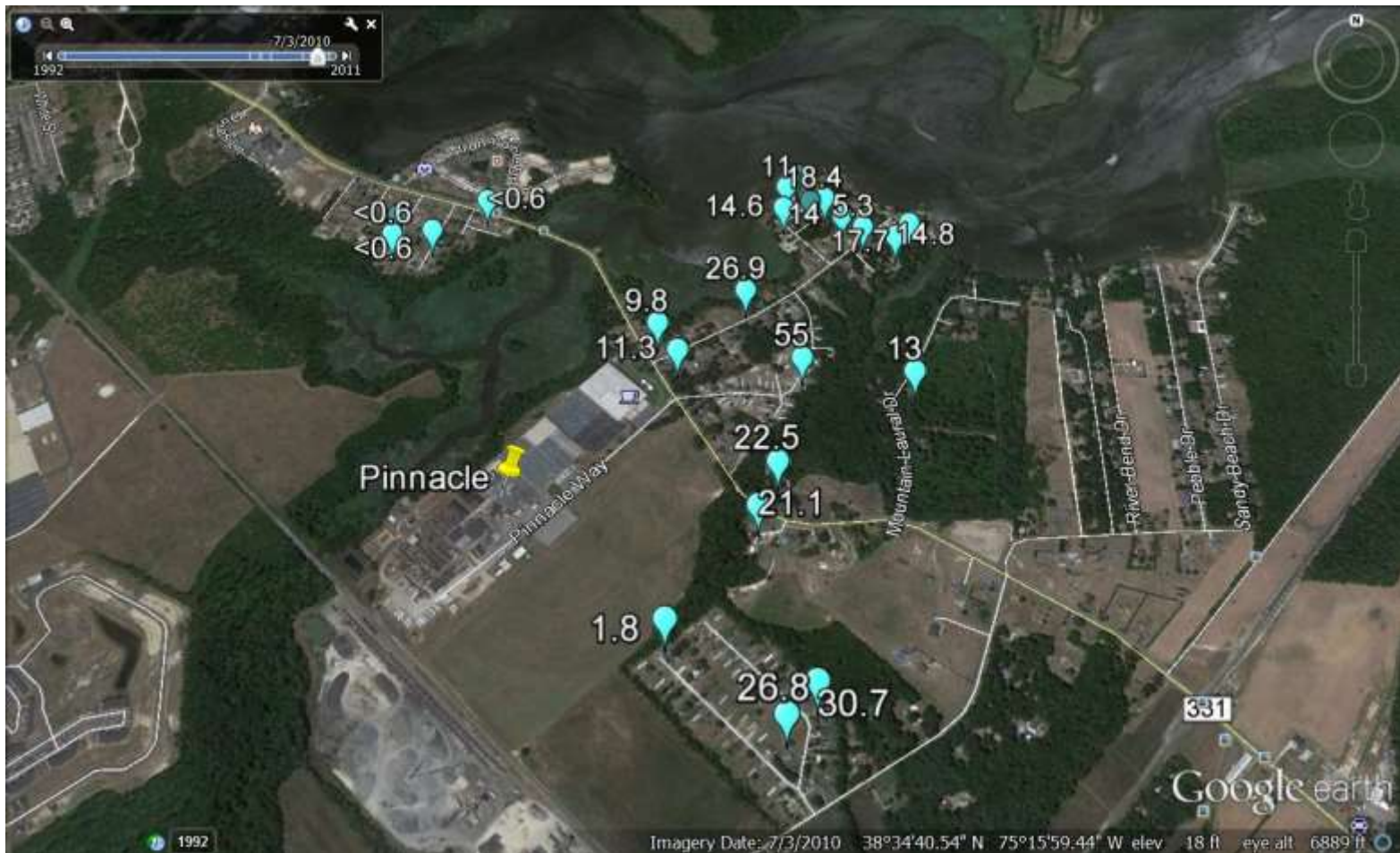
Alkalinity (not tested on-site) Plume extends beyond area sampled.



Lower Alkalinity results from acidic plume. (What did the acid carry with it?)



Sulfate (not tested onsite) Plume extends beyond area sampled.



Sulfate from pickling spice is a good marker.

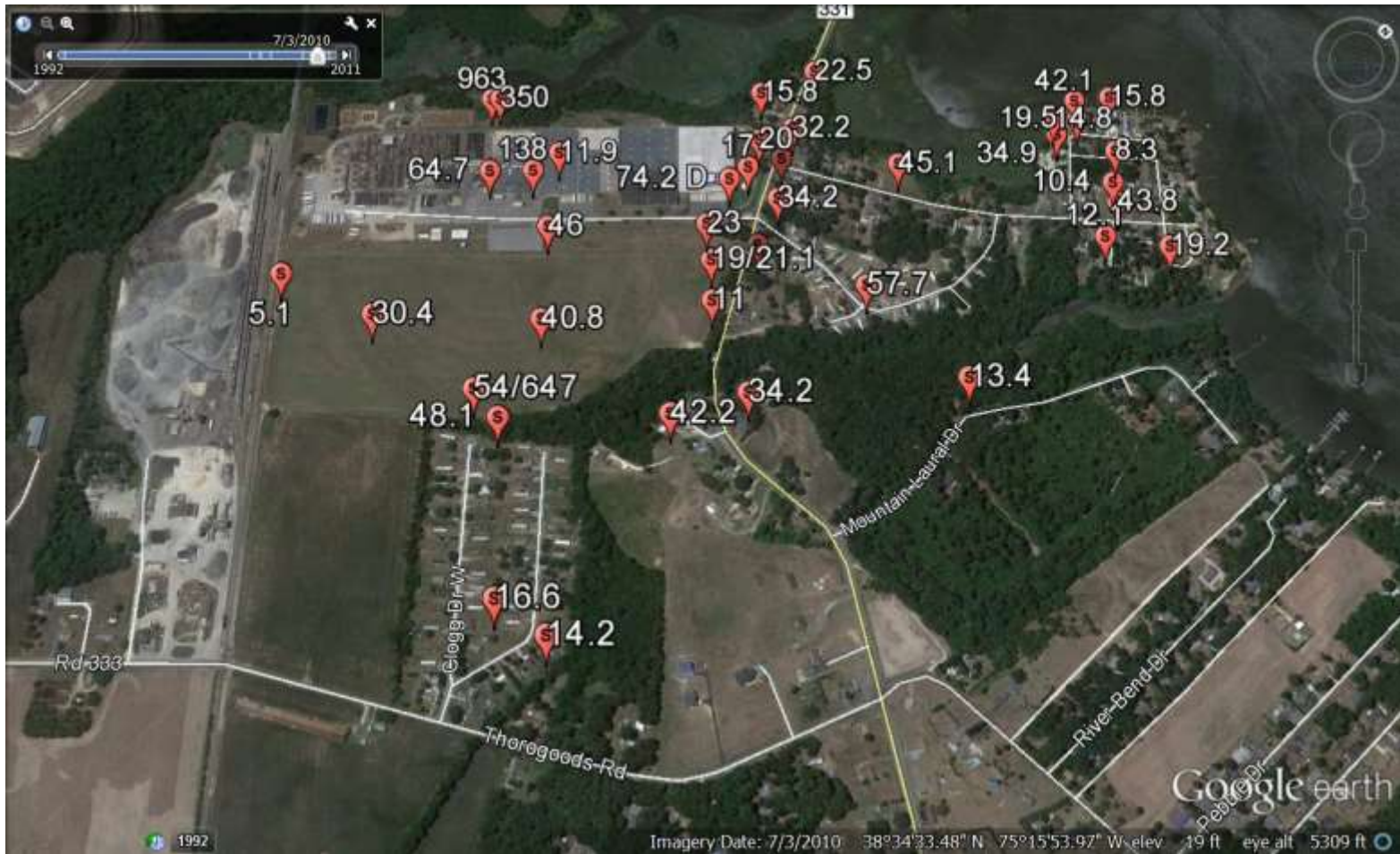


Sodium

Plume is predominately down Possum Point Road.



Highly contaminated areas onsite.

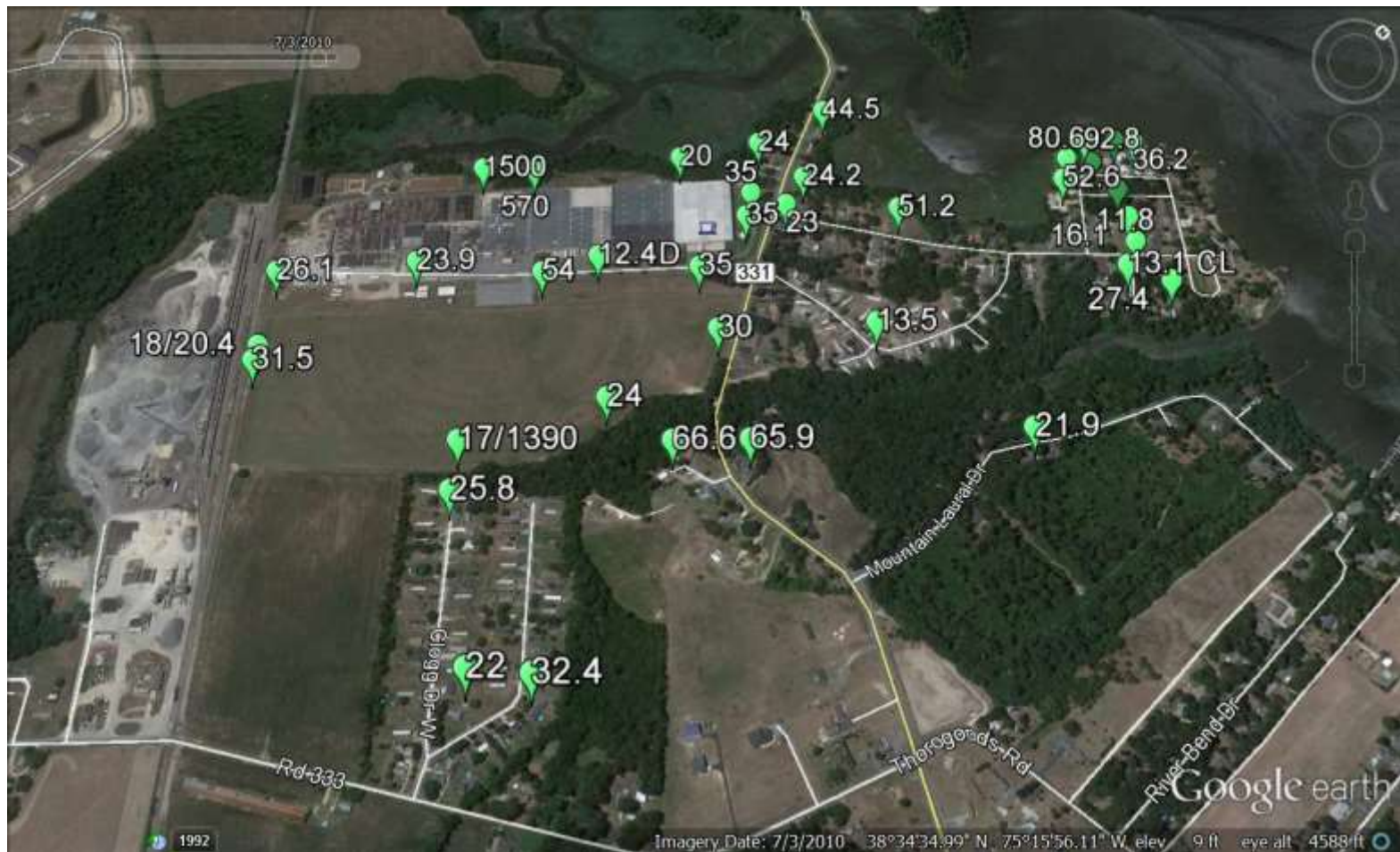


Chloride

Plume extends beyond Area Sampled.

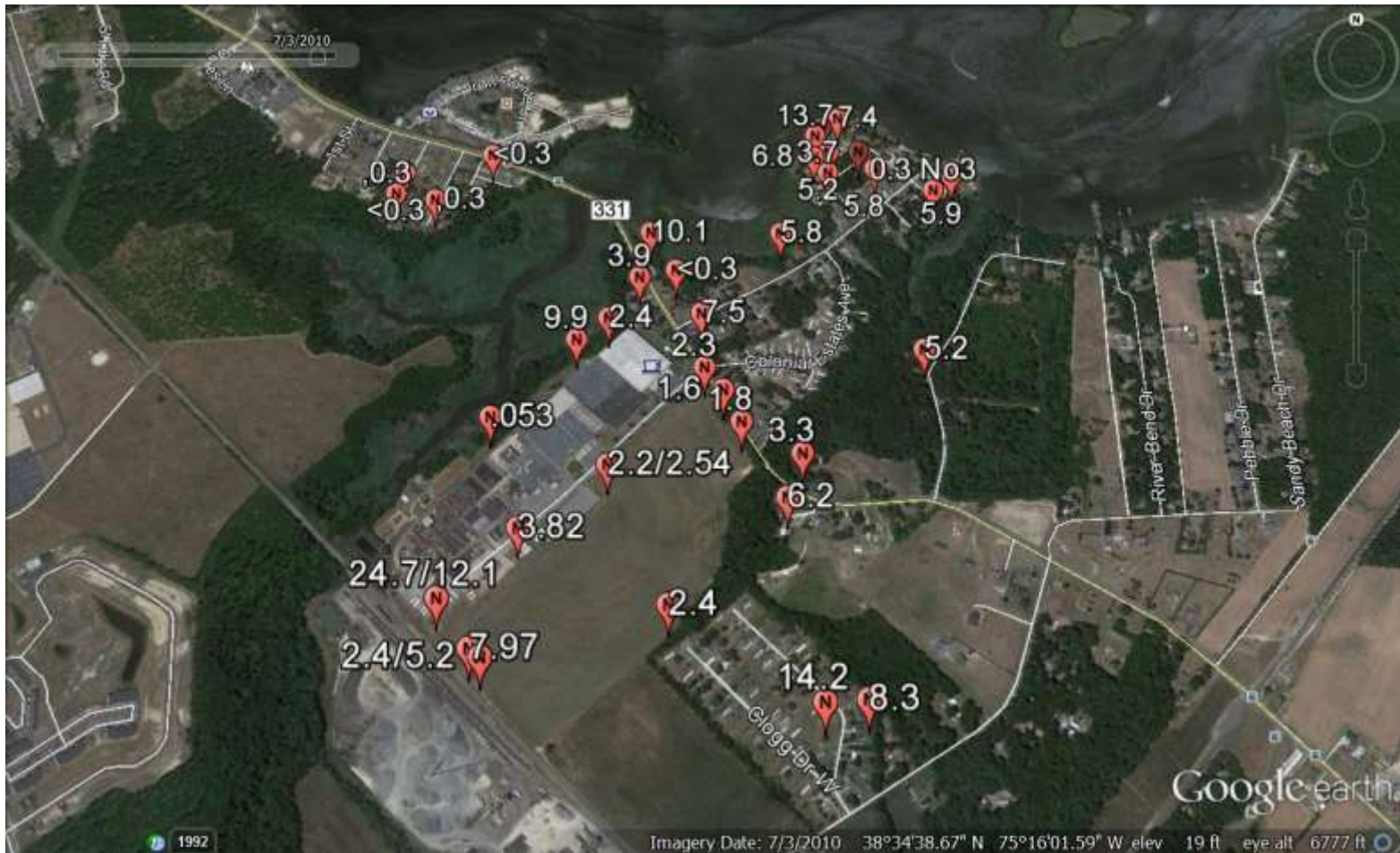


Highest chloride values observed along shoreline of Possum Point.

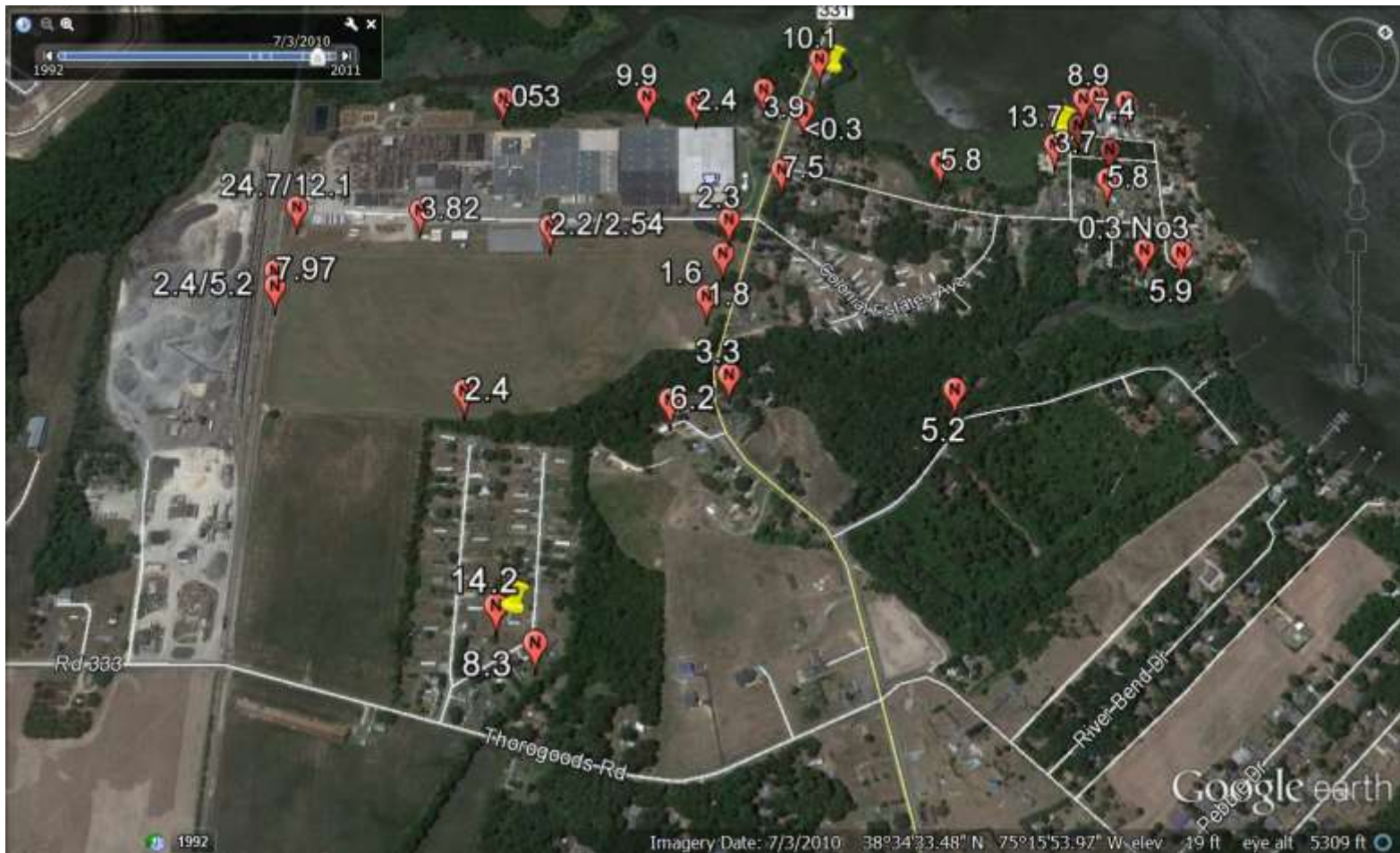


Nitrate

Plume is concentrated along Possum Point Road & extends to east.



Levels above MCL are observed in 3 off-site wells.



How far has the plume gone?

